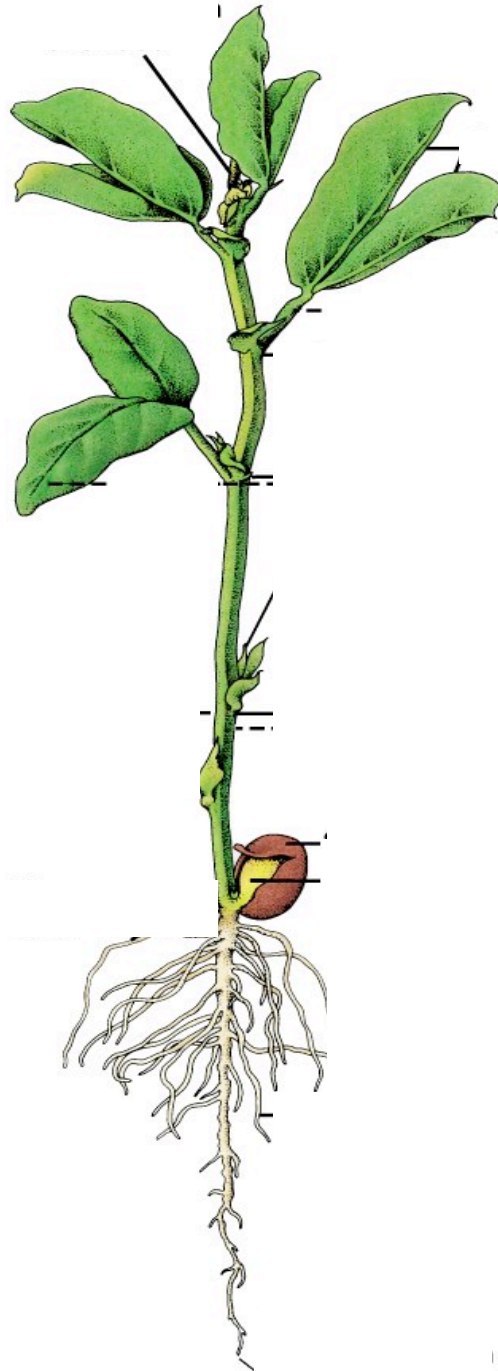
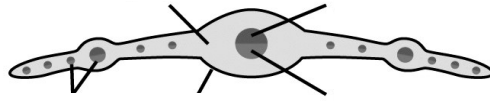


Plants in Motion Spring 2016
Botany Worksheet 2

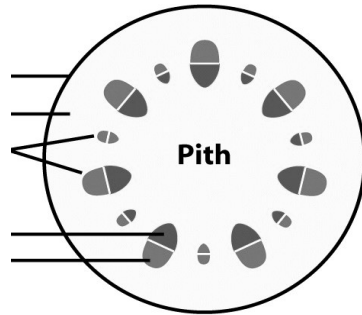
1. Label the parts of the plant body.



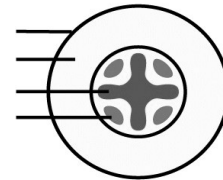
2. Label the plant organs and tissues.



(a) Leaf



(b) Stem

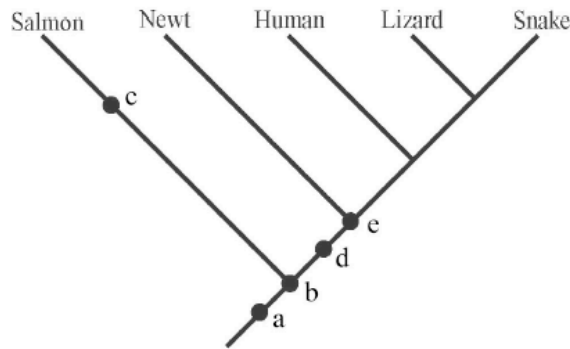


(c) Root

3. What are the three tissue systems of the plant body and of what tissues are they composed?

4. How do parenchyma, collenchyma and sclerenchyma cells differ from one another? What are their respective functions?

4. Draw a simple cladogram including the following taxa: green algae, bryophytes (mosses, hornworts and liverworts), seedless vascular plants, gymnosperms and flowering plants. Using *Plants of the Pacific Northwest*, include a species at the tips of the branches for each of the plant groups represented.



5) If you were to add a trout to the phylogeny shown above, where would its lineage attach to the rest of the tree?

6. You decide to create a species list of all the plants in your front yard. You think you have discovered a new species! Describe the taxonomic process you would use to confirm that you, indeed, had a new species.

7. Name three species concepts currently utilized by scientists today. Give an advantage for each concept that you list.

8. Put a box around the binomial species name that is written correctly according to the international standards of botanical nomenclature. Circle or label the incorrect part(s) of each answer that is NOT correct.

Platismatia glauca

platismatia glauca

platismatia Glauca

Platismatia Glauca

Platismatia glauca

Platismatia Glauca