

1A

cut line



cut line

2A

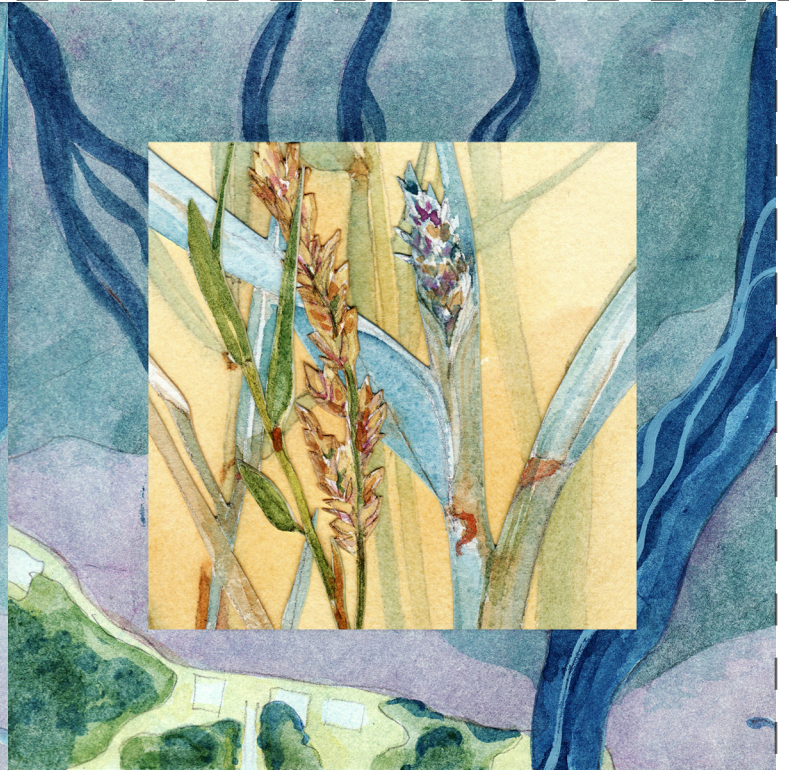
cut line



cut line

1B

cut line



cut line

2B

cut line



cut line



3A

cut line



cut line

4A

cut line



cut line

3B

cut line



cut line

4B

cut line



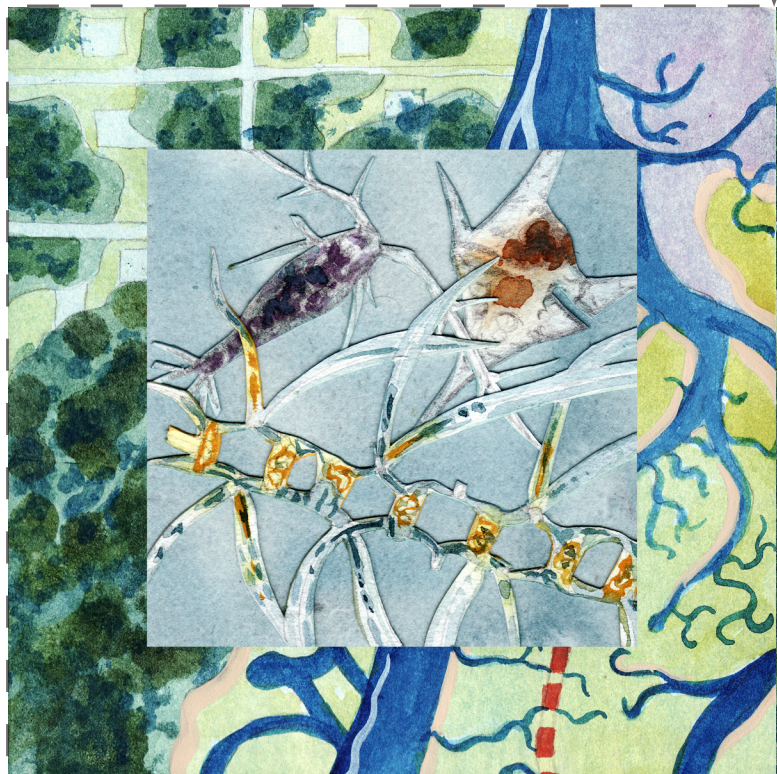
cut line



cut line

5A

cut line



cut line

fold line

5B

cut line



cut line

cut line

cut line

6A

cut line



cut line

fold line

6B

cut line



cut line

cut line

cut line

fold line

cut line



7A

cut line

cut line



cut line

7B

cut line

cut line



cut line

8A

cut line

cut line



cut line

8B

cut line

cut line



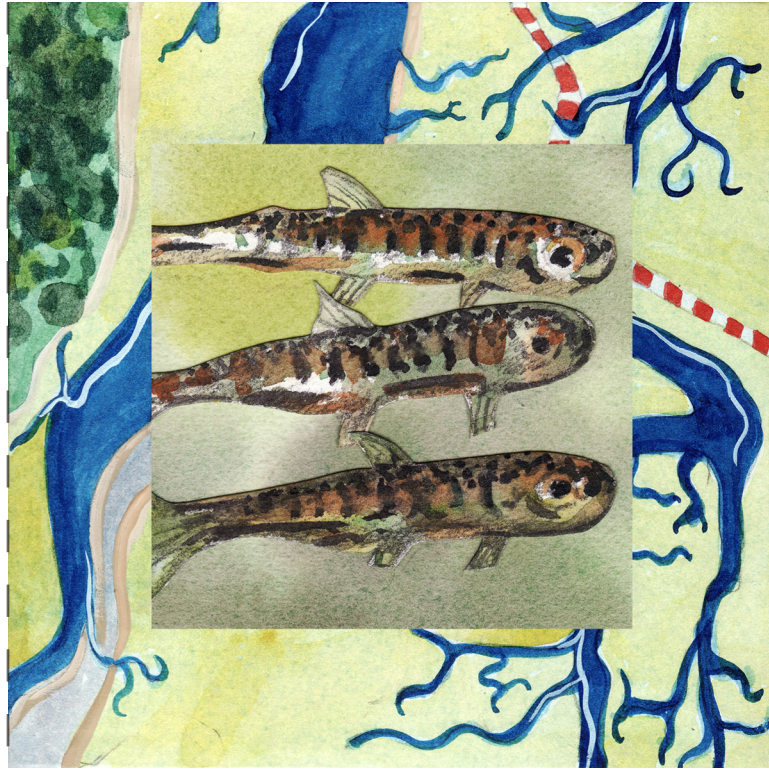
cut line



cut line

9A

cut line



cut line

fold line

9B

cut line



cut line

cut line

cut line

10A

cut line



cut line

fold line

10B

cut line



cut line

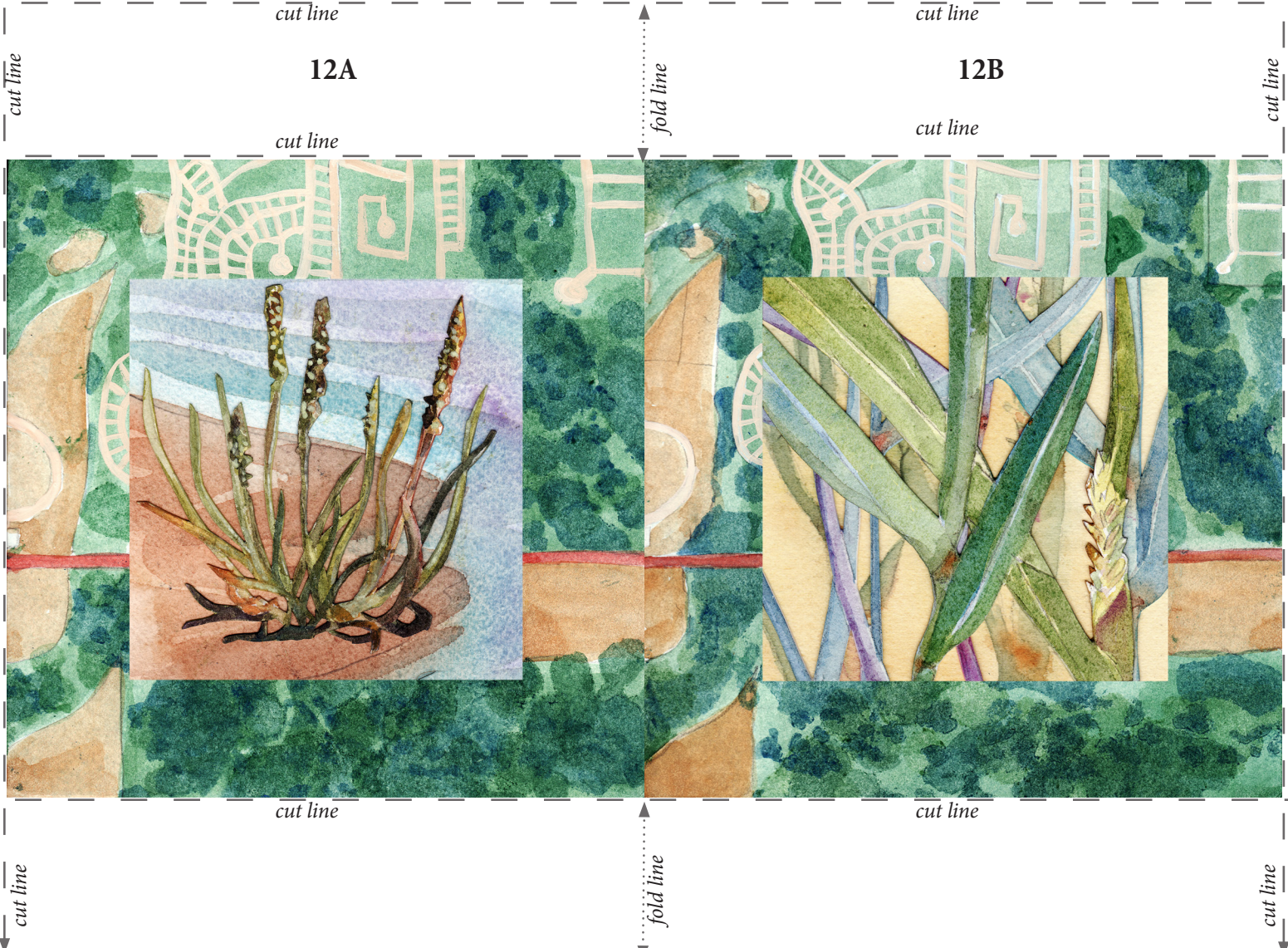
cut line

cut line

fold line

cut line







13A

cut line

cut line



cut line

13B

fold line

cut line



cut line

14A

cut line

cut line



cut line

14B

fold line

cut line



cut line

cut line

fold line

cut line



15A

cut line

cut line



cut line

fold line

15B

cut line

cut line



cut line

16A

cut line

cut line



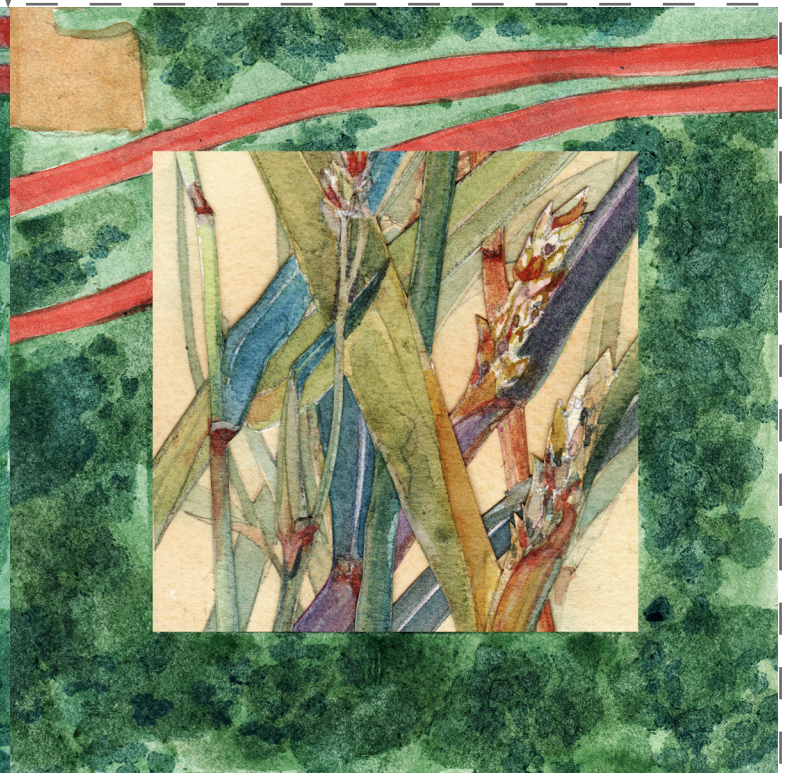
cut line

fold line

16B

cut line

cut line



cut line

cut line

fold line

cut line



## Information Card Side A

### Nisqually Delta Restoration Puzzle

*Lucia Harrison created the Nisqually Delta Restoration Puzzle based upon her observations at Red Salmon Creek, Braget Marsh, and the Billy Frank Jr. Nisqually National Wildlife refuge near Olympia, Washington. She painted the 32 watercolor illustrations.*

*You have Lucia Harrison's permission to use the Nisqually Delta Restoration Puzzle for Educational, non-commercial purposes (Creative Commons License 2016). To download additional copies of the puzzle booklet and puzzle tiles visit:*

*[sites.evergreen.edu/nisqually\\_puzzle](http://sites.evergreen.edu/nisqually_puzzle)*

## Information Card Side B

### Nisqually Delta Restoration Puzzle

*Each tile has an outer map-like frame and an interior image of a plant or animal. Turn the puzzle pieces so that all the Reed Canary Grass tiles face up. Match the map area of the tiles to create the image of the Nisqually River Delta before restoration when the agricultural dikes kept the salt water out. The puzzle helps you visualize the effects of the dikes and the dominant invasive species.*

*To represent the restoration, when the dikes were removed, turn the tiles over so the inside images show different plants and animals. Look at how the map changed and the diversity of plants and animals that we hope will thrive in the delta.*

*For more illustrated instructions and additional activities see the puzzle booklet.*

### Instructions for Making the Puzzle Tiles:

*You should have downloaded 9 sheets of 8.5 x 11" paper with images of the front and back of each puzzle tile. Fold the sheets in half along the "fold line" (hotdog style). Unfold the sheets and cut along the "cut lines". Each sheet will give you two tiles. The front and back are joined along the fold line. Refold the tile and glue or tape the tile shut. Glue stick or double sided tape work well.*

*You are now ready to assemble the puzzle. Please see the puzzle booklet for illustrated instructions and additional activities. Questions and Suggestions? Email Lucia Harrison: [harrisol@evergreen.edu](mailto:harrisol@evergreen.edu)*

### Acknowledgements

*Lucia Harrison would like to thank the Nisqually Natural Resources Department, Nisqually River Education Project, Sheila Wilson, Justin Hall, Don Perry, Amy Greene, Gerardo Chin-Leo, Amy Cook, Carri LeRoy, Jeff Antonelis-Lapp, Joe Feddersen, Aisha Harrison, Deborah Greenwood, and James Murphy.*