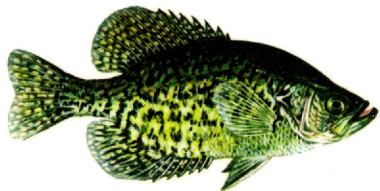


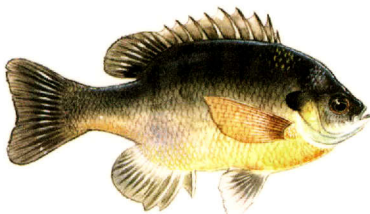
# FRESHWATER FISH

## COMMONLY CAUGHT IN TEXAS



### Black Crappie (*Pomoxis nigromaculatus*)

Similar to **white crappie**; also called **crappie**, **white perch**, **papermouth**. **DESCRIPTION:** Silvery olive with numerous black spots irregularly spaced over body. Black crappie dorsal fin has 7-8 dorsal spines whereas white crappie has 5-6. **HABITAT/HABIT:** Deep water with sparse vegetation and still backwater lakes, reservoirs and sloughs with brush or underwater structures. **SIZE:** Averages less than 2 pounds, but can reach up to 5 pounds. **FISHING:** Small minnows, small streamer flies, small marabou or plastic jigs and worms.



### Bluegill (*Lepomis macrochirus*)

Also called **bream**, **sunfish**, **gills**. **DESCRIPTION:** Deep blue underside of gill flap. Flexible, black ear flap and black spot on soft dorsal fin. **HABITAT/HABIT:** Vegetation and sunken trees of shallow backwater rivers, lakes and ponds. **SIZE:** Average under a pound, but can reach up to 4 pounds. **FISHING:** Worms, crickets, mealworms, small jigs, spinners, miniature insect crankbaits or flyfishing tackle (flies, poppers, worm imitations).



### Largemouth Bass (*Micropterus salmoides*)

Also called **bass**, **largemouth**, **bigmouth**. **DESCRIPTION:** Jawbone extends beyond the back of the eye. Dorsal fins nearly separated or deeply notched. Olive to dark-green to light green with yellowish tint. **HABITAT/HABIT:** Moderately clear to turbid, quiet warm waters in streams, rivers, lakes, reservoirs and ponds. Vegetation, near logs, trees, brush, stumps and underwater contours. **SIZE:** Average from 1-6 pounds, 12-14 pounds common. **FISHING:** Crankbaits, spinner baits, jigs, soft plastics, spoons, flies, minnows, earthworms, crawfish, leeches, frogs, lizards and insects.



### Channel Catfish (*Ictalurus punctatus*)

Also called **channel**, **willow cat**, **fiddler cat**, **twister**. **DESCRIPTION:** Deeply forked tails, curved margin on anal fin. Olive brown to dark blue bodies; young silver with black spots. **HABITAT/HABIT:** Streams, rivers, lakes, eddies, ponds and even shallowest of waters. **SIZE:** Average 1 1/2 to 6 pounds, but may reach 40 pounds. **FISHING:** Worms, cutbait, shrimp, liver, blood or stink baits.



### White Bass (*Morone chrysops*)

Also called **sand bass**, **sandies**, **whites**. **DESCRIPTION:** Double dorsal fin where front spiny portion separated from soft-rayed portion. Dark gray to black on back with bright silver sides and white belly. Several incomplete dusky stripes or lines run lengthwise on body. **HABITAT/HABIT:** Large streams, rivers and lakes. Adults feed primarily on shad and always found in open water. **SIZE:** Averages 1/2 pound to 2 pounds, up to 5 pounds. **FISHING:** Small plugs, spoons, spinners, jigs, minnows and small crawfish in rivers, lakes and streams.



### Rainbow Trout (*Oncorhynchus mykiss*)

Also called **rainbows**. **DESCRIPTION:** Colorful pink or red stripe extending down length of body. Back is dusky olive and sides along with dorsal and tail fins covered with numerous black spots. **HABITAT/HABIT:** Cold water streams, primarily in the Guadalupe River, and stocked for additional angling experiences. **SIZE:** Average less than 1 pound, but can reach up to 3 pounds. **FISHING:** Fly fishing gear and small insect-like flies, small spinners, cheese, kernel corn or even small bread balls.



### Freshwater Drum (*Aplodinotus grunniens*)

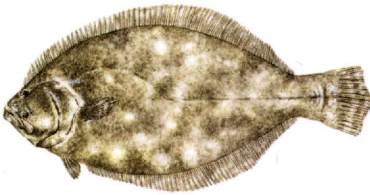
Also called **gaspergou**, **gou**, **gaspers**, **drum**. **DESCRIPTION:** Silvery gray above with shading silver sides and white belly. **HABITAT/HABIT:** Major rivers and reservoir impoundments. Sand and gravel bottoms. **SIZE:** Averages is 1 to 3 pounds, but occasionally will exceed 20 pounds. **FISHING:** Crawfish, dead shrimp, nightcrawlers, minnows, jigs, spoons and fish or worm-like soft plastics.



TPWD receives federal assistance from the U.S. Fish and Wildlife Service and other federal agencies. TPWD is therefore subject to Title VI of the Civil Rights Act of 1964, Section 504 of the Rehabilitation Act of 1973, Title II of the Americans with Disabilities Act of 1990, the Age Discrimination Act of 1975, Title IX of the Education Amendments of 1972, in addition to state anti-discrimination laws. TPWD will comply with state and federal laws prohibiting discrimination based on race, color, national origin, age, sex or disability. If you believe that you have been discriminated against in any TPWD program, activity or event, you may contact the U.S. Fish and Wildlife Service, Division of Federal Assistance, 4401 N. Fairfax Drive, Mail Stop: MBSP-4020, Arlington, VA 22203, Attention: Civil Rights Coordinator for Public Access.

# SALTWATER FISH

COMMONLY CAUGHT IN TEXAS



## Southern Flounder (*Paralichthys lethostigma*)

Also called **flounder**.

**DESCRIPTION:** Flat-bodied, eyes on top. Changes color and pattern of upper side to match color of mud bottom of coastal bays. **HABITAT/HABIT:** In fall, found at the mouth of bayous leading into back bays and marshes, against marsh grasses, oyster reefs and spoil islands. **SIZE:** Average 1-3 pounds, but may reach 13 pounds. **FISHING:** Live finger mullet, mud minnows, live shrimp or artificial lures close to bottom.



## Red Drum (*Sciaenops ocellatus*)

Also called **redfish, reds, rat red, bull red**.

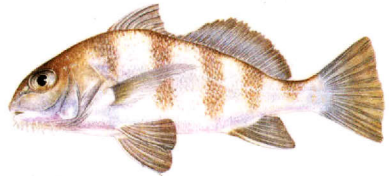
**DESCRIPTION:** Reddish bronze with black spot on each side of base of tail. **DESCRIPTION:** Feeds heads down, tails up, searching bottom for crabs, shrimp, marine worms and small fish. Young prefer the shallow, bay water; adults migrate to the Gulf. **SIZE:** up to 50 pounds! **FISHING:** Live finger mullet, cut mullet, live croaker, live or dead shrimp and lures fished close to the bottom and gold and silver spoons. **NOTE:** There are stocked red drum in a few of our fresh water impoundments.



## Sheepshead (*Archosargus probatocephalus*)

Also called **sheephead, convict fish, bay snapper, sargo**.

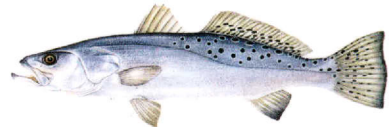
**DESCRIPTION:** Black and white bars up and down fish's sides: sheep-like teeth. **HABITAT/HABIT:** Oyster reefs, barnacle encrusted pier pilings, bulk-heads and jetty rocks. **SIZE:** Averages 2 pounds, but may reach 15 pounds. **FISHING:** Fish with hermit crabs, fiddler crabs, live or dead shrimp around pier pilings, rock groins, jetties and oyster reefs.



## Black Drum (*Pogonias cromis*)

Also called **drum, drumfish**.

**DESCRIPTION:** Barbs, or whiskers, on chin; young have black vertical stripes, absent in adults. **HABITAT/HABIT:** Shallow bay waters to Gulf waters more than 100 feet deep. **SIZE:** Average 2 pounds, but may reach 80 pounds. **FISHING:** Dead shrimp or pieces of crab.



## Spotted Seatrout (*Cynoscion nebulosus*)

Also called **specks, speckled trout, trout, spotted weakfish**.

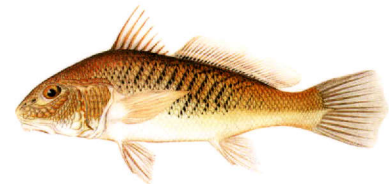
**DESCRIPTION:** Silvery sides, greenish back and numerous dark spots on the upper sides of the body and on the dorsal and caudal fins. Mouth orange inside, one or two distinctive canine teeth, tip, upper jaw. **HABITAT/HABIT:** Shallow waters, near sea grass bed, reef or marsh. **SIZE:** Averages 1 1/2 to 3 pounds, but may reach exceed 13 pounds. **FISHING:** Live shrimp, live finger mullet, live croaker or artificial baits.



## Sand Seatrout (*Cynoscion arenarius*)

Also called **sand trout**.

**DESCRIPTION:** Large, orange mouths, one or two rounded teeth front upper jaw. Lacking spots with pinkish sheen upper sides. **HABITAT/HABIT:** Deeper bays, channels and shallow Gulf. **SIZE:** Average 3/4 pound, but may reach 3 1/2 pounds. **FISHING:** Dead shrimp or cut-fish and jigs under lights.



## Atlantic Croaker (*Micropogonias undulatus*)

Also called **croaker, golden croaker**.

**DESCRIPTION:** Row of small barbels (whiskers) each side of lower jaw. Young silvery and older fish brassy yellow; short, irregular brown streaks. **HABITAT/HABIT:** Bottoms of bays, surf, shell spoil islands. **SIZE:** Average 3/4 pound, but may reach 4 pounds. **FISHING:** Peeled shrimp, live shrimp, cut bait.



Life's better outside.®

4200 Smith School Road  
Austin, Texas 78744  
PWD LF K0700-692 (11/13)

© 2013 Texas Parks and Wildlife Dept.  
In accordance with Texas State Depository  
Law, this publication is available at the  
Texas State Publications Clearinghouse  
and/or Texas Depository Libraries.

Brought to you by the  
**Angler Education Program** –  
Attend a course, receive a fish pin and  
certificate. For more information, contact  
1-800-792-1112 or [www.tpwd.texas.gov](http://www.tpwd.texas.gov)

